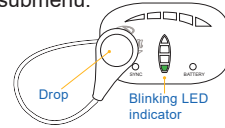


WIRELESS CONTROLLER

Through the Wireless Controller the customer is able to limit the maximum power as well as select the profile that best adapts to their style of riding. In order to access the menu, you must proceed with the following indications, always with the board initially disconnected.

1. Place the Drop over the Onean logo and press on it, as indicated in the following image.

2. Continue to press on the Drop. The LED display in the Battery indicators will begin to progressively light up. Each LED indicates a different setting.
3. Once a selection is chosen, press on the Drop again to access the submenu.



A) SYNCHRONIZATION

The Wireless Controller will enter search mode until a board is detected and the sync light will turn on.

Place the Battery inside its compartment and the sync light will blink indicating a successful synchronization.

B) MAXIMUM POWER

The top LED display bar will progressively complete. Press on the Drop to set a new profile depending on the following functions.

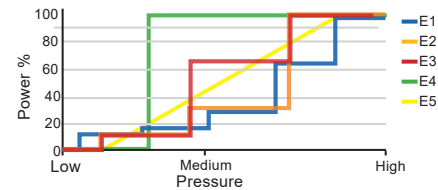
LEDs	Wattos	Visualization
1 LED	800w	
2 LEDs	1.200w	
3 LEDs	2.600w	
4 LEDs	3.700w	
5 LEDs	5.000w	

C) WIRELESS CONTROL PRESSURE SETTINGS

The top LED display bar will progressively complete. Press on the Drop to set a new profile depending on the desired phase.

- E1: 5 power levels.
- E2: 3 power levels.
- E3: similar to E2 with more power on the second level.

- E4: 0 to 100%, designed for experienced riders.
- E5: linear power depending on the pressure.



D) RESET

E) STATUS CHECK

Place the Drop over the Onean logo and press on the drop only one time instead of holding it pressed.

The controller will show the preferences for each category.

PIC I/AG #ONEAN #ONEANBOARDS

carver
TWIN

We're here to help

www.onean.com | support@onean.com

Find the Full User's Manual at www.onean.com/my-account/

[@oneanboards](https://www.instagram.com/oneanboards)

[fb.me/oneanboards](https://www.facebook.com/oneanboards)

[@oneanboards](https://twitter.com/oneanboards)

QUICK START GUIDE

Onean

WELCOME TO THE CARVER TWIN QUICK START GUIDE

Thank you for purchasing a Carver Twin Board.

This board has been designed for a quick and easy assembly. Please follow the instructions in this Quick Guide. The first assembly of the unit will take approximately 15 min. It is extremely important that these procedures are carried out correctly.

This guide contains information about the assembly and the use of the Carver Twin.

Please read the entire guide before using this product. It is responsibility of the customer to use the product supplied by Aquila Boards in a secure way following the indicated guidelines. The company won't be responsible for any damages occurred to the customer or the unit due to inappropriate use.

Need more help? We're only an email away support@onean.com

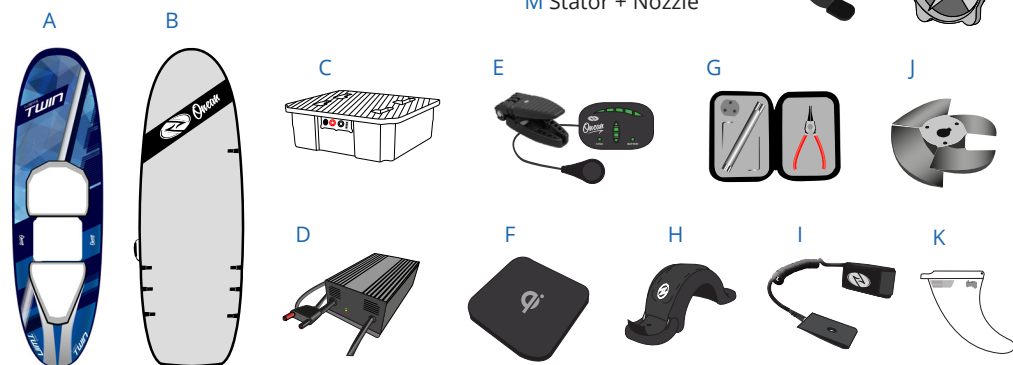
MAIN SECURITY CHECKS

- Always check the unit before entering the water
- Avoid entering the water through wave brake zones
- Always wear the leash attached
- Never insert hands or feet inside the jet unit
- Be aware that the board doesn't have a break zones
- Don't touch the Jet Units stainless steel tube after use

WHAT COMES IN THE BOX?

A Carver Twin Board with Jet Units
 B Carver Bag
 C Lithium Ion Battery
 D Battery Charger
 E Wireless Controller & Trigger
 F Qi Charger

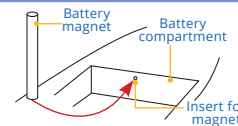
G Tooling Kit
 H 2 x Wide Footstraps
 I Leash + Security Key
 J Impeller
 K 2 x US Box Fins
 L Handle
 M Stator + Nozzle



INITIAL ASSEMBLY AND CONFIGURATION

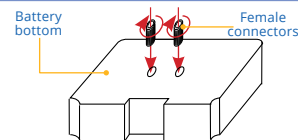
INSERT THE BATTERY MAGNET

Insert the cylindrical magnet, which you can find in the Wireless Controller case, in the hole inside the battery compartment.



INSERT FEMALE CONNECTORS

Please, screw the female connectors, found in the wireless controller case, in the holes of the bottom part of the battery using the tool provided on the tooling kit.

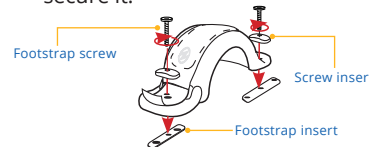


POSITIONING THE FOOTSTRAPS

The board incorporates inserts for goofy and regular riders.

1. Depending on the style of riding, place the footstraps over the desired inserts. One on the front of the board and one on the back.

3. Align the holes. Screw the footstrap and secure it.

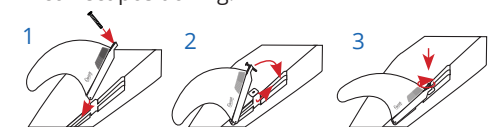


INSERT THE FINS

In order to insert the fins, flip over the board and place it over a flat surface.

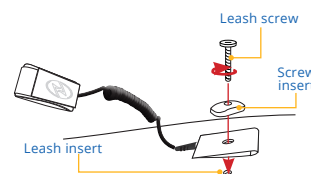
1. Insert the fin inside the fin box as shown in the picture.
2. Insert the metallic square and align the holes.

3. Screw the fins to the insert and verify its correct positioning.



INSTALL THE LEASH

1. Insert the screw through the insert and hold the leash.
2. Align the holes with the insert located on the left hand lower side of the board.
3. Screw the leash to the board and verify its correct positioning.

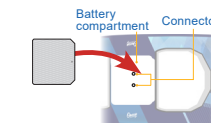


BATTERY CONNECTION

1. Please check that the watertight seal and the frame are clean, without sand or signs of deterioration. Check the battery compartment and make sure it doesn't contain any water.
2. Turn the drain cap 360° counter-clock wise. Place the Battery over the pad, near the compartment where the battery must be inserted.
3. Grab the Battery by the top handle and insert it in the compartment. The connection receptor will light up indicating a successful connection.

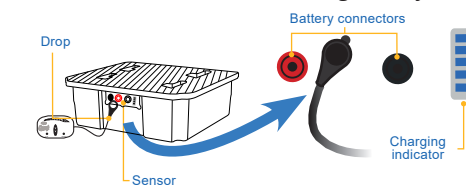


4. Once the Battery is inserted in the board, insert the four pins to lock the Battery. If the pins do not enter easily, please, press down on the battery so the watertight seal is sufficiently compressed.
5. Turn the drain cap clock wise until locked to assure water tightness.



BATTERY CHARGE

Place the drop near the battery display, the LED indicator will show the remaining battery.



Visualization	Charge%
■ ■ ■ ■ ■	20%
■ ■ ■ ■ ■	40%
■ ■ ■ ■ ■	60%
■ ■ ■ ■ ■	80%
■ ■ ■ ■ ■	100%

RECHARGING THE BATTERY ⚠

Always connect the charger to the wall outlet before connecting it to the battery. It is extremely important to respect the connector colors (red with red and black with black). Reverse polarity could damage the battery irreversibly.

